

Mono-crystalline solar modules

SE series silicon solar modules with high quality are produced by Solar EnerTech (Shanghai) CO.,Ltd. It has a wide application area, such as grid-connected power system, stand alone power system, civic construction, communication, traffic, military, industry and agriculture etc.

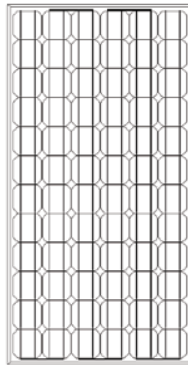
Feature

1. high quality guarantee using 125/156 mm high conversion efficiency crystalline silicon solar cells
2. high performance bypass diodes minimize the power

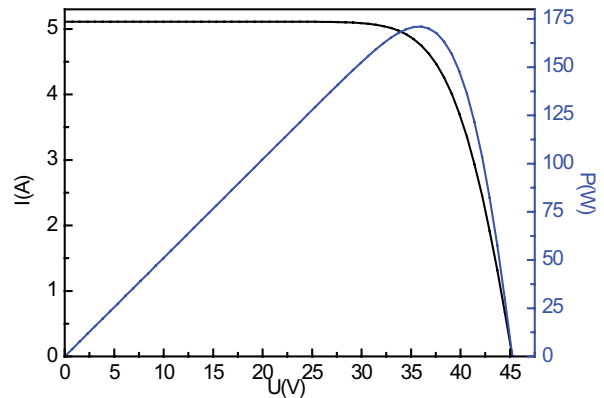
drop caused by shade

3. high transmittance, low iron tempered glass; high performance EVA; a weatherproof back sheet and sandblast electrophoresis aluminium frame extend the application of modules greatly
4. 25-year limited warranty on power output and performance(see quality guarantee)
5. sealed, waterproof, multi-functional junction box gives high level of safety

Model	Electrial parameters					Size of module (mm)	Weight of module (kg)	Cells type	Layout
	Maximum Power Pmp(W)	Maximum Power Voltage Vm	Maximum Power current Imp	Short Circuit current	Open Circuit voltage				
SE-180M	180	35.9	5.01	5.30	44.7	1580*808*46	16	125*125	12*6
SE-175M	175	35.7	4.90	5.21	44.5	1580*808*46	16	125*125	12*6
SE-170M	170	35.5	4.79	5.15	44.3	1580*808*46	16	125*125	12*6
SE-165M	165	35.3	4.67	5.08	44.1	1580*808*46	16	125*125	12*6
SE-160M	160	35.1	4.56	4.99	43.7	1580*808*46	16	125*125	12*6
SE-155M	155	34.8	4.45	4.91	43.4	1580*808*46	16	125*125	12*6
SE-150M	150	34.6	4.34	4.83	43.2	1580*808*46	16	125*125	12*6
SE-145M	145	34.4	4.22	4.74	42.9	1580*808*46	16	125*125	12*6
SE-140M	140	34.2	4.09	4.65	42.7	1580*808*46	16	125*125	12*6



SE-170M



U.S.A Office

Solar EnerTech Corp. 1600 Adam Drive
Menlo Park
Tel: 650- 688- 5800
April@infoteche.com
www.solarenertech.com

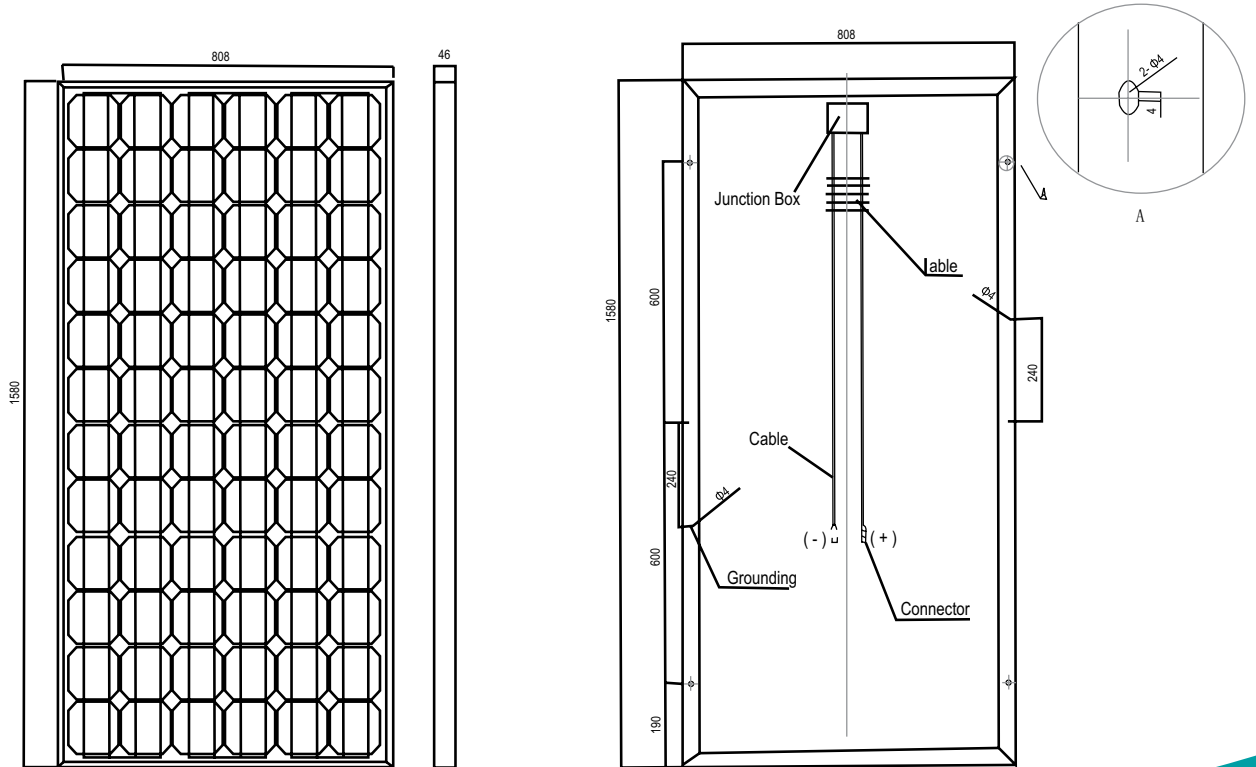
Sales & Marketing Team

New Shanghai International Tower, 24A 360 Pudong Rd.
Shanghai China
Tel: 86-21 6886 3335 Fax: 86-21 6886 2221
Js@solaresh.com
www.solare-power.com

Mono-crystalline solar modules

Maximum system voltage (V)	1000V
Temperature coefficients of Isc (%)	+0.04±0.015%/°C
Temperature coefficients of Voc (%)	-(0.35±0.02)%/°C
Temperature coefficients of Pm (%)	-(0.5±0.05)%/°C
Temperature coefficients of Im (%)	+0.04%/°C
Temperature coefficients of Vm (%)	-0.38%/°C
Temperature Range	-40°C~+90°C
Tolerance Wattage (e.g. +/-3%)	±3%
Surface Maximum Load Capacity	60m/s(200kg/m2)

Allowable Hail Load	steel ball fall down from 1m height
Length of Cables (mm)	900mm
Frame (Material, Corners, etc.)	Aluminum
Standard Test Conditions	AM 1.5 1000W/m2 25°C
Warranty	2 years product warranty, 10 years 90% of power and 25 years 80% of power



U.S.A Office

Solar Enertech Corp. 1600 Adam Drive
Menlo Park
Tel: 650- 688- 5800
April@infoteche.com
www.solarenertech.com

Sales & Marketing Team

New Shanghai International Tower, 24A 360 Pudong Rd.
Shanghai China
Tel: 86-21 6886 3335 Fax: 86-21 6886 2221
Js@solaresh.com
www.solare-power.com



Mono-crystalline solar modules

SE series silicon solar modules with high quality are produced by Solar EnerTech (Shanghai) CO.,Ltd. It has a wide application area, such as grid-connected power system, stand alone power system, civic construction, communication, traffic, military, industry and agriculture etc.

Feature

1. high quality guarantee using 125/156 mm high conversion efficiency crystalline silicon solar cells
2. high performance bypass diodes minimize the power

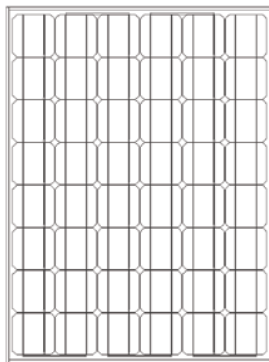
drop caused by shade

3. high transmittance, low iron tempered glass; high performance EVA; a weatherproof back sheet and sandblast electrophoresis aluminium frame extend the application of modules greatly

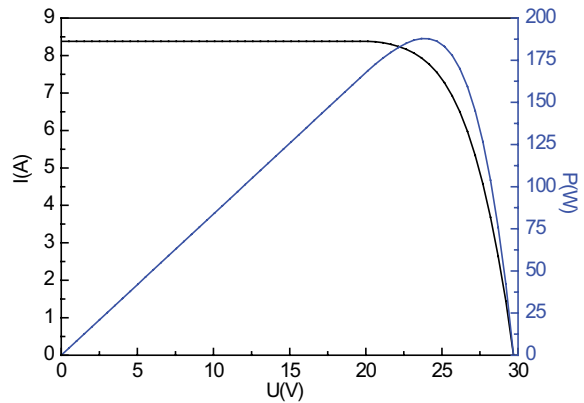
4. 25-year limited warranty on power output and performance(see quality guarantee)

5. sealed, waterproof, multi-functional junction box gives high level of safety

Model	Electrial parameters					Size of mod- ule (mm)	Weight of module (kg)	Cells type	Layout
	Maximum Power Pmp(W)	Maximum Power Voltage Vm p (V)	Maximum Power current Imp (A)	Short Circuit Current Isc (A)	Open Circuit Voltage Voc (V)				
SE-190M	190	23.8	7.98	8.38	29.7	1320*994*46	16.5	156*156	8*6
SE-180M-1	180	23.6	7.63	8.20	29.5	1320*994*46	16.5	156*156	8*6
SE-175M-1	175	23.4	7.48	8.10	29.3	1320*994*46	16.5	156*156	8*6



SE-190M



U.S.A Office

Solar EnerTech Corp. 1600 Adam Drive
Menlo Park
Tel: 650- 688- 5800
April@infoteche.com
www.solarenertech.com

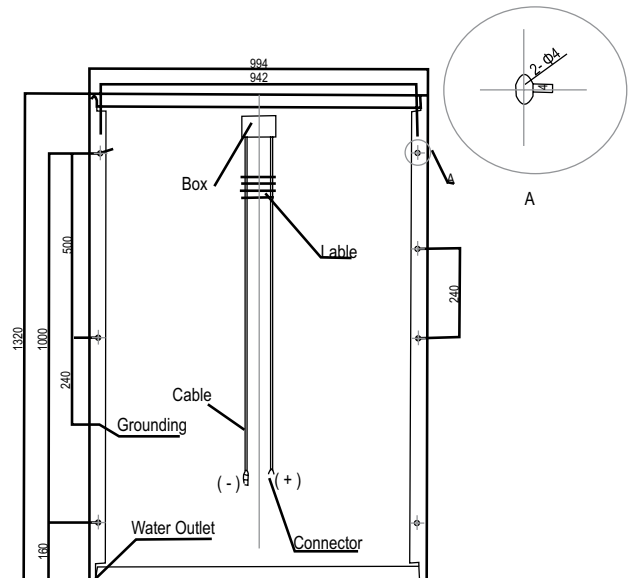
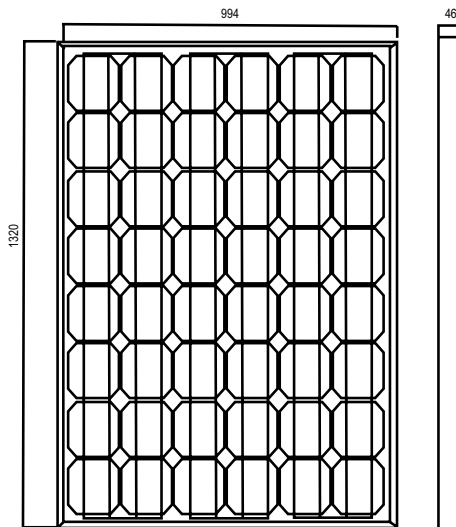
Sales & Marketing Team

New Shanghai International Tower, 24A 360 Pudong Rd.
Shanghai China
Tel: 86-21 6886 3335 Fax: 86-21 6886 2221
Js@solaresh.com
www.solare-power.com

Mono-crystalline solar modules

Maximum system voltage (V)	1000V
Temperature coefficients of Isc (%)	+0.04±0.015%/°C
Temperature coefficients of Voc (%)	-(0.35±0.02)%/°C
Temperature coefficients of Pm (%)	-(0.5±0.05)%/°C
Temperature coefficients of Im (%)	+0.04%/°C
Temperature coefficients of Vm (%)	-0.38%/°C
Temperature Range	-40°C ~+90°C
Tolerance Wattage (e.g. +/-3%)	±3%
Surface Maximum Load Capacity	60m/s(200kg/m2)

Allowable Hail Load	steel ball fall down from 1m height
Length of Cables (mm)	900mm
Frame (Material, Corners, etc.)	Aluminum
Standard Test Conditions	AM 1.5 1000W/m2 25°C
Warranty	2 years product warranty, 10 years 90% of power and 25 years 80% of power



U.S.A Office

Solar Enertech Corp. 1600 Adam Drive
Menlo Park
Tel: 650- 688- 5800
April@infoteche.com
www.solarenertech.com

Sales & Marketing Team

New Shanghai International Tower, 24A 360 Pudong Rd.
Shanghai China
Tel: 86-21 6886 3335 Fax: 86-21 6886 2221
Js@solaresh.com
www.solare-power.com



Mono-crystalline solar modules

SE series silicon solar modules with high quality are produced by Solar EnerTech (Shanghai) CO.,Ltd. It has a wide application area, such as grid-connected power system, stand alone power system, civic construction, communication, traffic, military, industry and agriculture etc.

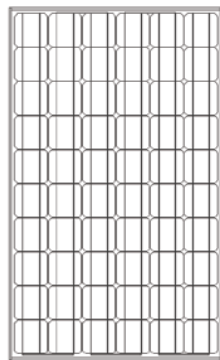
Feature

1. high quality guarantee using 125/156 mm high conversion efficiency crystalline silicon solar cells
2. high performance bypass diodes minimize the power

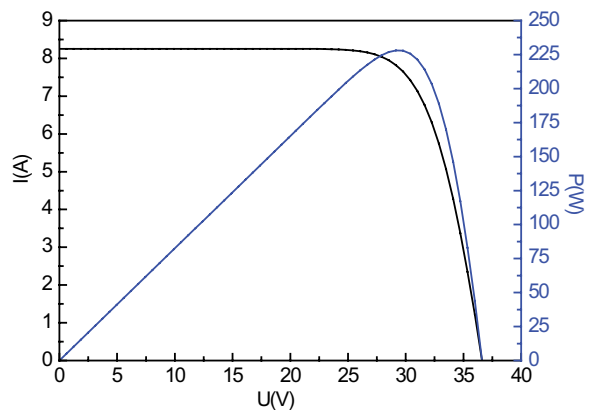
drop caused by shade

3. high transmittance, low iron tempered glass; high performance EVA; a weatherproof back sheet and sandblast electrophoresis aluminium frame extend the application of modules greatly
4. 25-year limited warranty on power output and performance(see quality guarantee)
5. sealed, waterproof, multi-functional junction box gives high level of safety

Model	Electrial parameters					Sizeof module (mm)	Weight of module (kg)	Cells type	Layout
	Maximum Power Pmp(W)	Maximum Power Voltage Vmp (V)	Maximum Power currentImp (A)	Short Circuit current Isc (A)	Open Circuit voltage Voc (V)				
SE-240M	240	29.9	8.03	8.42	36.9	1636*994*46	20	156*156	10*6
SE-230M	230	29.7	7.74	8.25	36.6	1636*994*46	20	156*156	10*6
SE-220M	220	29.4	7.48	8.12	36.3	1636*994*46	20	156*156	10*6
SE-210M	210	29.2	7.19	8.00	36.0	1636*994*46	20	156*156	10*6
SE-200M	200	28.9	6.92	7.80	35.7	1636*994*46	20	156*156	10*6



SE-230M



U.S.A Office

Solar EnerTech Corp. 1600 Adam Drive
Menlo Park
Tel: 650- 688- 5800
April@infoteche.com
www.solarenertech.com

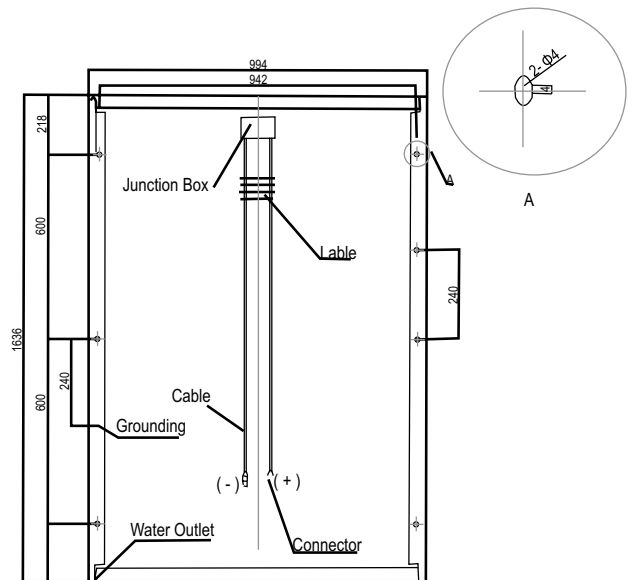
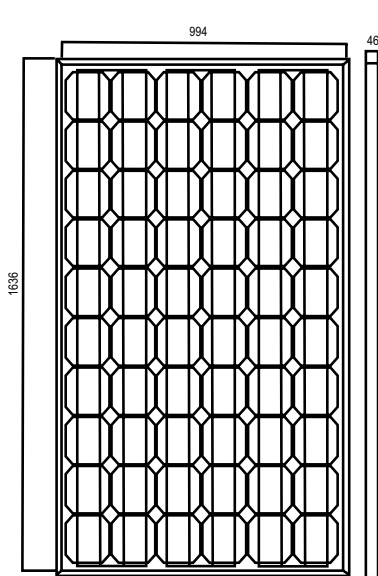
Sales & Marketing Team

New Shanghai International Tower, 24A 360 Pudong Rd.
Shanghai China
Tel: 86-21 6886 3335 Fax: 86-21 6886 2221
Js@solaresh.com
www.solare-power.com

Mono-crystalline solar modules

Maximum system voltage (V)	1000V
Temperature coefficients of Isc (%)	+0.04±0.015%/°C
Temperature coefficients of Voc (%)	-(0.35±0.02)%/°C
Temperature coefficients of Pm (%)	-(0.5±0.05)%/°C
Temperature coefficients of Im (%)	+0.04%/°C
Temperature coefficients of Vm (%)	-0.38%/°C
Temperature Range	-40°C~+90°C
Tolerance Wattage (e.g. +/-3%)	±3%
Surface Maximum Load Capacity	60m/s(200kg/m2)

Allowable Hail Load	steel ball fall down from 1m height
Length of Cables (mm)	900mm
Frame (Material, Corners, etc.)	Aluminum
Standard Test Conditions	AM 1.5 1000W/m2 25°C
Warranty	2 years product warranty, 10 years 90% of power and 25 years 80% of power



U.S.A Office

Solar Enertech Corp. 1600 Adam Drive
Menlo Park
Tel: 650- 688- 5800
April@infoteche.com
www.solarenertech.com

Sales & Marketing Team

New Shanghai International Tower, 24A 360 Pudong Rd.
Shanghai China
Tel: 86-21 6886 3335 Fax: 86-21 6886 2221
Js@solaresh.com
www.solare-power.com

