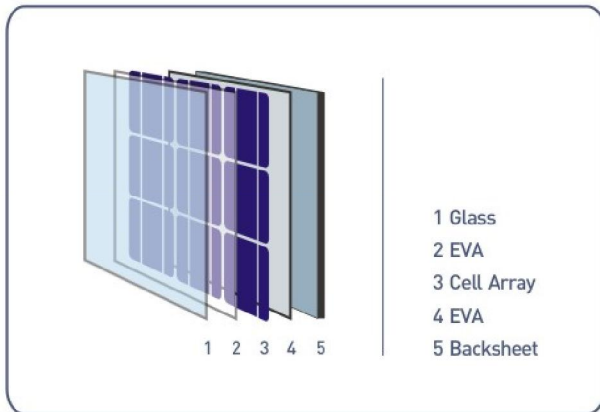




**ASTRO**energy  
SOLAR

# CHSM 6610M



## AVAILABLE WATTAGES

215

220

225

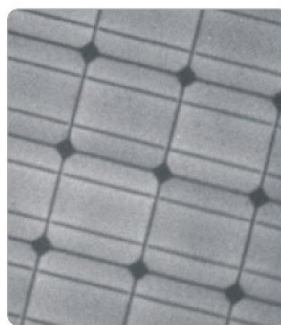
230

235



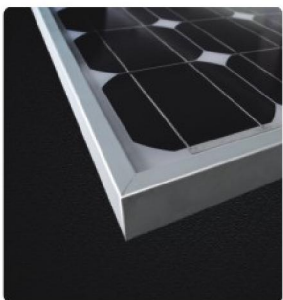
### Precision Solar Cell Manufacturing

- First PV company in Mainland China to use Manufacturing Execution System (MES) in solar cell production. The products, processes, and equipments are strictly controlled using SPC tools for the highest quality and performance.



### State-of-the-Art Solar Module Manufacturing

- Within the same power range and efficiency, cells are further sorted by the short circuit current in order to minimize losses caused by electric-mismatch.
- IV and EL tests are performed before the lamination to ensure the consistency of encapsulated cells and process reliability.
- The EL test is repeated on each module before shipping to ensure product's quality and reliability.



### Aesthetic Appeal

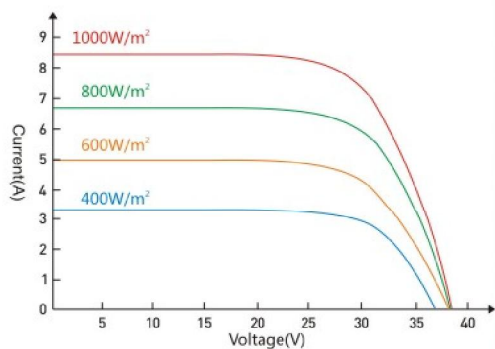
- Modules are assembled with high quality, smooth aluminum alloy frames.



**CHSM 6610M**

**Electrical Characteristics**

Electrical Characteristics



Pmax(Wp)	215	220	225	230	235
Isc(A)	8.42	8.45	8.48	8.52	8.55
Voc(V)	37.02	37.18	37.33	37.48	37.63
Imp(A)	7.71	7.78	7.86	7.93	8.01
Vmp(V)	27.94	28.30	28.66	29.03	29.39
Tolerance(Wp)	±3%				
Max. System Voltage(V)	DC1000V for SC II and DC600V for USA NEC				
NOCT	47±2°C				
Power Temp. Coeff(/°C)	-0.560%				
Current Temp. Coeff(/°C)	0.032%				
Voltage Temp. Coeff(/°C)	-0.382%				
Ambient Temp(°C)	-40~85				
Max. Mechanical Load(Kg/m²)	240				
Test Condition	Irradiance of 100 mW/cm², AM1.5 Spectrum, and a Cell Temperature of 25°C				

**Dimension Characteristics**

Length	1652mm / 5.420feet	Width	994mm / 3.261feet
Height	45mm / 0.148feet	Weight	20 kg / 44.0 lbs
Cell Type	156×156(mm) Monocrystalline Silicon		
Cell Matrix	6×10	Cell Number	60 pcs
Frame	Aluminum Alloy		

**Front View and Back View**

